

Date: 2025-01-27 12:36:03 -05:00
 Serial: LL030520
 LightLab PureRoots Botanicals, LLC
 Operator:
 Sample ID: GUAVA CREAM
 Method: LightLab HPLC
 Test Type: Plant
 Weight / Volume: 0.308 g
 Solvent: 30 ml
 Temperature: 24.5 °C
 Notes:

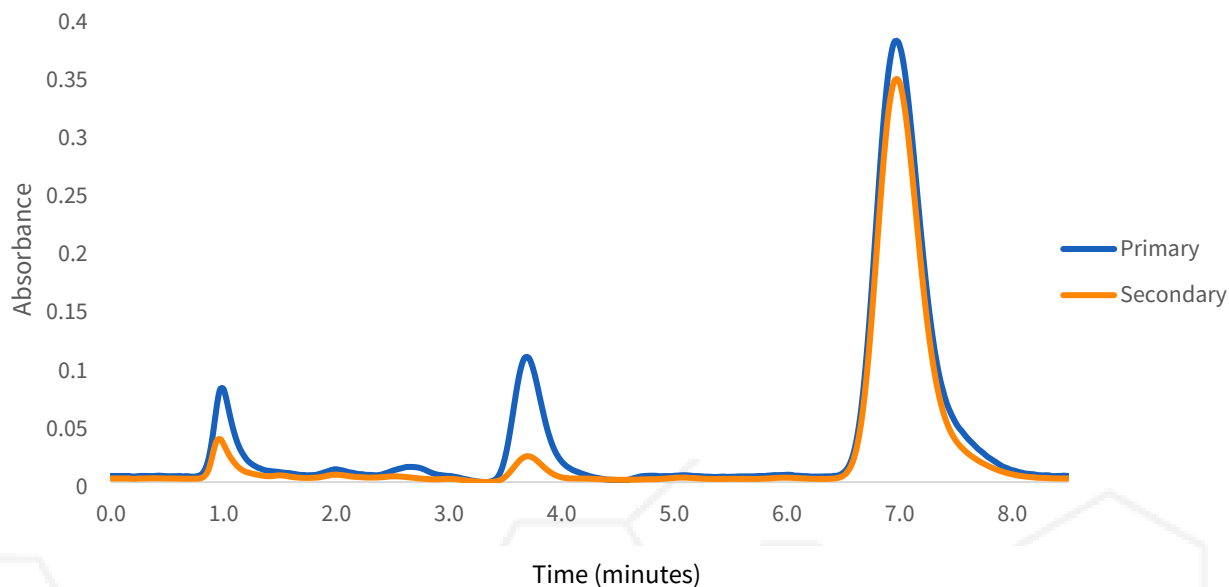
Cultivar:
 Moisture: 14.0%
 Col Tests Remaining: 21
 CoA Revision: 0
 Calibration Exp: 2025-07-30
 Product:
 SKU:
 Batch:

Cannabinoid Profile

Analyte	%	LOQ
THC-A	23.6	0.57
Δ9-THC	ND	0.57
CBD-A	ND	0.57
CBD	ND	0.57
CBG-A	0.67	0.57
CBG	ND	0.57
CBN-A	ND	0.57
CBN	ND	0.57
CBC-A	1.6	0.57
CBC	ND	0.57
Δ8-THC*	ND	4.5
THCV-A	ND	0.57
THCV	ND	0.57
Terpenes	High	
Total THC	20.7	
Total CBD	ND	
Total Cannabinoids	25.9	

ND = Not Detected; n/a = Not Analyzed; LOQ = Limit of Quantification; Total THC = (0.877 x THC-A) + Δ9-THC; Total CBD = (0.877 x CBD-A) + CBD. * Δ8THC has lower precision and higher detection limit than other cannabinoids.

Chromatogram



Change History

Date	User	Action
2025-01-27 12:36:03 -05:00		Test Recorded
2025-02-06 22:51:36 -05:00		Generated a CoA (revision 0)



Scan for Authenticity

Approved

Date

The signatory confirms that the Operator has performed the sample preparation according to the LightLab User's Guide. This report is for quality assurance purposes only. These results relate only to the sample included on this report. Orange Photonics makes no claims as to the efficacy, safety, or risks associated with any detected or non-detected level of any compounds reported herein. Orange Photonics makes no claims regarding the adherence to sample preparation guidelines, by the operator, as outlined in the LightLab User's Guide.